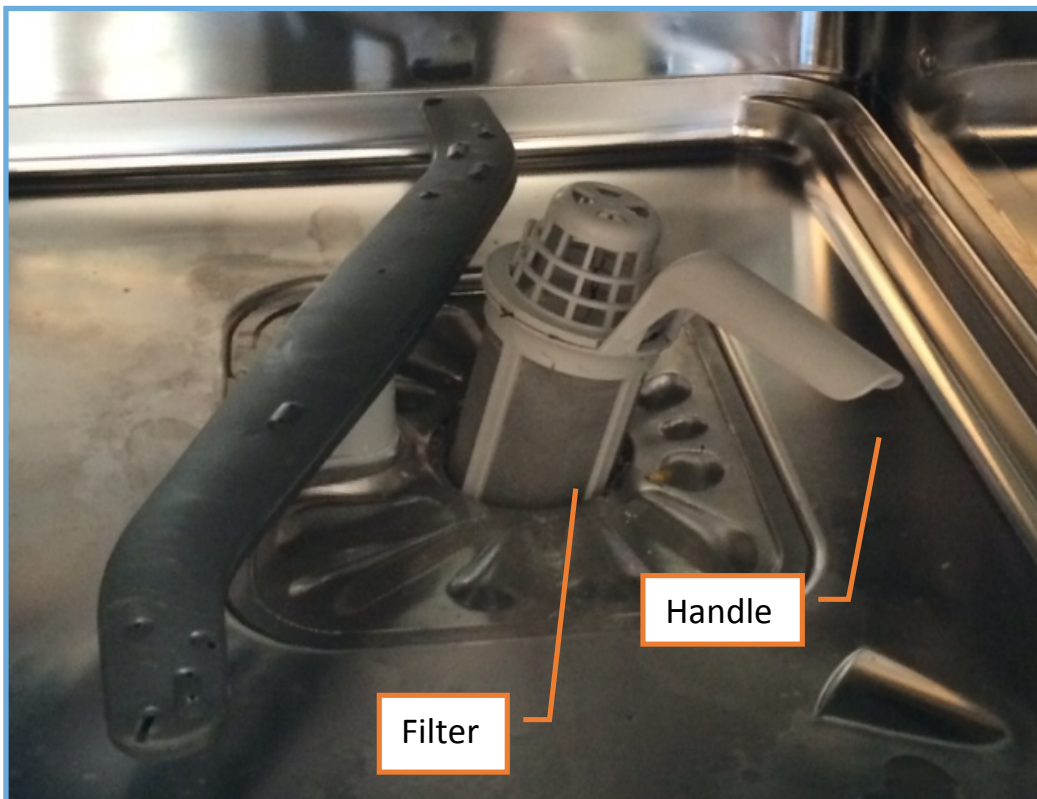


Happy dishwasher, happy *you!*

Check & rinse its filter!



Electrolux: Rotate handle & lift filter to remove.
Empty/rinse filter & re-install.

Other brands are similar.

See manufacturer's information for more details.

More info: www.alicantehoa.com → Owner Services → OMC Bulletins
www.vivoportal.com → Documents → Association Documents → OMC Bulletins