



North America Limited

# PRACTICAL USER'S GUIDE FOR THE OPTIFLAME ELECTRIC FIREPLACE

MODEL NUMBERS:

**BF33ST/DX**

**BF39ST/DX**

**HBI39ST/DX**

**BF45ST/DX**

**HBI45ST/DX**

Write Your Remote  
Control Code Number  
Here:

Quality checked by:

*Valued Customer,*

*We are pleased that you have chosen to purchase an electric fireplace  
manufactured by Dimplex North America Ltd.*

*Over the years, valuable memories will occur around the warmth and  
comfort of your hearth. Thank you for allowing our product to be the backdrop  
for those special moments.*

7206360200REV01

## QUICK REFERENCE GUIDE FOR THE OPTIFLAME ELECTRIC FIREPLACE

1. Prior to the first use of the fireplace verify the following:
  - Are the circuit breakers for the fireplace on?
  - Are the light bulbs in your fireplace loose? (to check, follow the instructions for replacing the light bulbs under the maintenance section of this manual)
2. The heater on your fireplace may emit a slight, harmless odor when first used. This odor is a normal condition caused by the initial heating of internal heater parts and will not occur again.
3. If your heater does not emit heat, ensure the large switch is on, the wall thermostat is set above the current room temperature and any wall switches for the unit are on. If this does not work, switch the unit off for 5 minutes and try again. Consult operation section of your practical users guide for further information.
4. The information regarding the model of your fireplace can be found on the rating plate located under the logs in the lighting area.
5. If you have any technical questions, questions regarding the operation of your fireplace, or require service for your fireplace contact Dimplex North America customer service at 1-888-DIMPLEX (1-888-346-7539).

Write Your Remarks  
Control Code Number  
Here

# CONTENTS

## PAGE 1

## Important Instructions

## PAGE 2 - 3

## Model and Serial Number Information

## PAGE 4

## Operation

## PAGE 5

## Maintenance

## PAGE 6

## Accessories

## PAGE 7

## Warranty

NOTE: Procedures and techniques that are considered important enough to emphasize

CAUTION: Procedures and techniques which, if not carefully followed, will result in damage to the equipment

WARNING: Procedures and techniques which, if not carefully followed, will expose the user to the risk of fire, serious injury, illness or death



## IMPORTANT INSTRUCTIONS

### SAVE THESE INSTRUCTIONS

### PLEASE RETAIN THIS USER'S GUIDE FOR FUTURE REFERENCE

When using electrical appliances, basic precautions should always be followed to reduce the risk of fire, electric shock, and injury to persons, including the following:

1. Read all instructions before using this fireplace.
2. This fireplace is hot when in use. To avoid burns, do not let bare skin touch hot surfaces. The trim around the heater outlet becomes hot during heater operation. Keep combustible materials, such as furniture, pillows, bedding, papers, clothes, and curtains at least 3 feet (0.9m) from the front of the unit.
3. Extreme caution is necessary when any heater is used by or near children or invalids and whenever the fireplace is left operating and unattended.
4. Do not operate any fireplace if the heater has malfunctioned, or if the fireplace has been dropped or damaged in any manner.
5. Do not use outdoors
6. This fireplace is not intended for use in bathrooms, laundry areas and similar indoor locations.
7. Do not insert or allow foreign objects to enter any ventilation or exhaust opening as this may cause an electric shock or fire, or damage to the heater.
8. To prevent a possible fire, do not block any intake or exhaust in any manner.
9. All electrical heaters have hot and arcing or sparking parts inside. Do not use in areas where gasoline, paint, or flammable liquids are used or stored or where the unit will be exposed to flammable vapors.
10. Do not modify this fireplace. Use it only as described in this manual. Any other use not recommended by the manufacturer may cause fire, electric shock or injury to persons.
11. Do not burn wood or other materials in this fireplace.
12. Do not strike fireplace glass.
13. Always use a certified electrician for installation.
14. Disconnect all power coming to fireplace at main service panel before performing any cleaning, or maintenance.
15. When transporting or storing the fireplace, keep in a dry place, free from excessive vibration and store as to avoid damage.

---

**NOTE:** Procedures and techniques that are considered important enough to emphasize

**CAUTION:** Procedures and techniques which, if not carefully followed, will result in damage to the equipment

**WARNING:** Procedures and techniques which, if not carefully followed, will expose the user to the risk of fire, serious injury, illness or death

# IMPORTANT INSTRUCTIONS

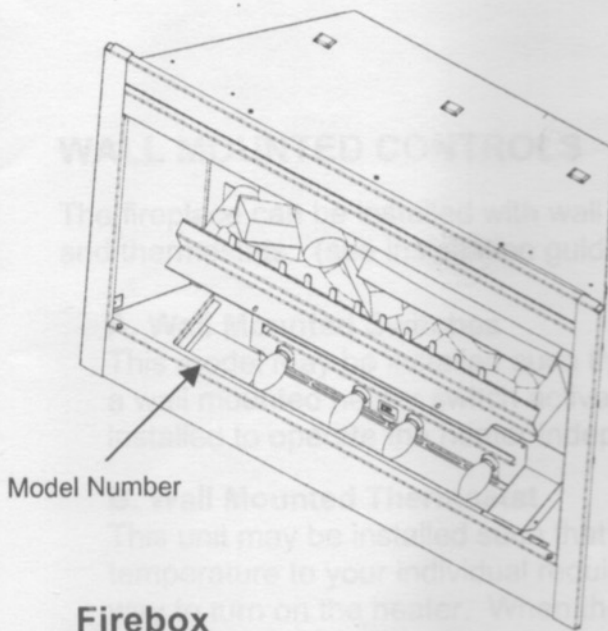
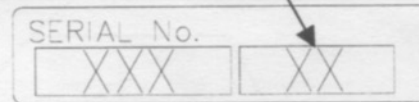
The controls for the Electric Fireplace are located at the bottom right hand corner of the unit.

If you have any questions about our products please have the product model and serial numbers available upon calling Dimplex customer service. To locate the model and serial number labels see below.



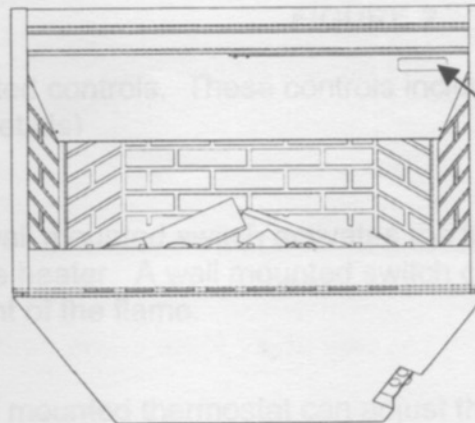
Model Number

Serial Number



Model Number

Firebox



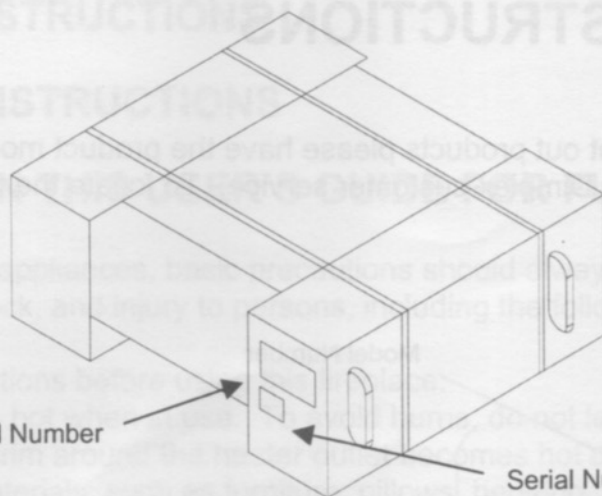
Serial Number

# IMPORTANT INSTRUCTIONS

## SAVE THESE INSTRUCTIONS

If you have any questions about out, please have the model and serial number labels ready. See below.

When using electrical appliances, there is always a risk of fire, electric shock and injury to persons. Read the following instructions carefully.



Model Number

Serial Number

### Carton

1. Read all instructions before using the heater.
2. This fireplace is not to be used on combustible surfaces. The heater must be placed on a non-combustible surface, such as concrete, brick, or stone, at least 3 feet (0.9m) from the front of the unit.
3. Extreme caution is necessary when any heater is refueled and whenever it is placed in full operation and maintained.
4. Do not operate the heater if the heater has malfunctioned or if it has been damaged or repaired by a qualified technician.
5. Do not use the heater for drying clothes or other items.
6. This fireplace is not intended for use in bedrooms, living rooms, or other locations.
7. Do not insert or allow foreign objects to enter any opening or vent as this may cause an electric shock or fire, or damage to the heater.
8. To prevent a possible fire, do not use the heater in any room where flammable liquids, gases, or vapors are present.
9. All electrical heaters have hot and arcing or sparking points. Do not use in areas where gasoline, paint, or flammable liquids are used or stored. Do not be exposed to flammable vapors.
10. Do not modify this fireplace. Use it only as described in this manual. Any other use not recommended by the manufacturer may cause fire, electric shock, or injury to persons.
11. Do not burn wood or other materials in this fireplace.
12. Do not smoke while using the heater.
13. Always use a certified electrician for installation.
14. Disconnect all power coming to fireplace at main service panel before performing any cleaning, or maintenance.
15. When transporting or storing the fireplace, keep in a dry place, free from excessive vibration and shocks to avoid damage.

**NOTE:** Procedures and techniques that are considered important for safe operation.

**WARNING:** Procedures and techniques which, if not carefully followed, could result in damage to the equipment.

**WARNING:** Procedures and techniques which, if not carefully followed, could result in the risk of fire, serious injury, illness or death.

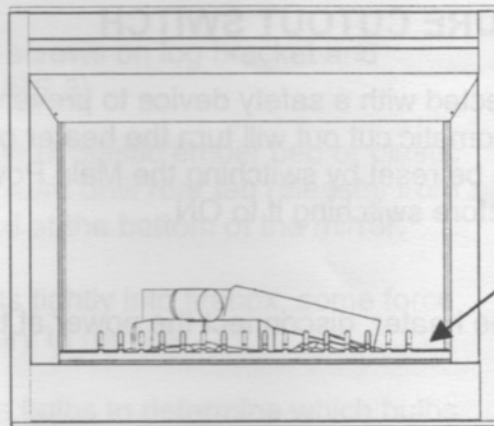


Model Number

Firebox

# OPERATION

The controls for the Electric Fireplace are located at the bottom right hand corner of the unit.



MANUAL CONTROLS

FIGURE 1

## MANUAL CONTROLS

### A. Main Power Switch

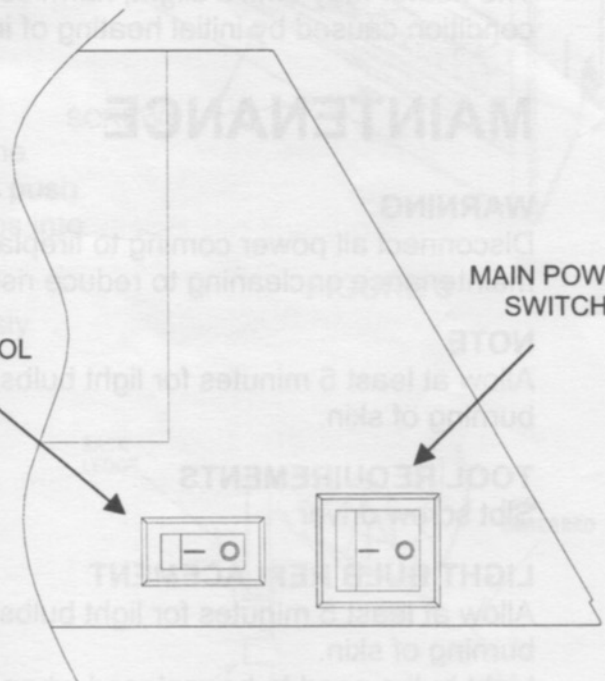
Main on/off switch, activates the flame effect

### B. Heater Control Switch

Heater ON/OFF switch, activates the heater

HEATER CONTROL  
SWITCH

MAIN POWER  
SWITCH



## WALL MOUNTED CONTROLS

FIGURE 2

The fireplace can be installed with wall mounted controls. These controls include wall switches and thermostats. (see installation guide for details)

### A. Wall Mounted Switches

This model may be installed such that a wall mounted switch activates the flame effect and a wall mounted heater switch activates the heater. A wall mounted switch can also be installed to operate the heater independent of the flame.

### B. Wall Mounted Thermostat

This unit may be installed such that a wall mounted thermostat can adjust the heat temperature to your individual requirements. Turn the thermostat control clockwise all the way to turn on the heater. When the room reaches the desired temperature, turn the thermostat knob counter clockwise until you hear a click. Leave in this position to maintain



the room temperature at this setting. For additional heat, turn the thermostat clockwise until you hear the click again and the heater will turn on. To turn the heater off, turn the thermostat counter clockwise all the way, and/or turn the manual heater switch on the unit to the OFF position.

## **RESETTING THE TEMPERATURE CUTOUT SWITCH**

The heater on this fireplace is protected with a safety device to prevent overheating. Should the heater overheat, an automatic cut out will turn the heater off and it will not come back on without being reset. It can be reset by switching the Main Power switch (FIGURE 2) to OFF and waiting 5 minutes before switching it to ON.

### **CAUTION**

If you need to continuously reset the heater, disconnect the power at the main service panel and call your local dealer.

### **NOTE**

The heater may emit a slight, harmless odor when first used. This odor is a normal condition caused by initial heating of internal heater parts and will not occur again.

## **MAINTENANCE**

### **WARNING**

Disconnect all power coming to fireplace at main service panel before attempting an maintenance or cleaning to reduce risk of fire, shock or damage to persons.

### **NOTE**

Allow at least 5 minutes for light bulbs to cool off before touching bulbs to avoid accidental burning of skin.

### **TOOL REQUIREMENTS**

Slot screw driver

### **LIGHT BULB REPLACEMENT**

Allow at least 5 minutes for light bulbs to cool off before touching bulbs to avoid accidental burning of skin.

Light bulbs need to be replaced when you notice a dark section of the flame or when the clarity and detail of the log exterior disappears. There are four bulbs under the log set which generate the flames and embers.

### **LIGHT BULB REQUIREMENTS**

Quantity of 4 clear chandelier or chandelabra bulbs with an E-12 (small) socket base, 60 watt rating. Example: GE 60BC or Philips 60CTC.

**DO NOT EXCEED 60 WATTS PER BULB.**

### **CAUTION**

When handling log only apply force to the ember bed section not directly to the logs.

### **HELPFUL HINTS**

It is a good idea to replace all light bulbs at one time if they are close to the end of their rated life. Group replacement will reduce the number of times you need to open the unit to replace light bulbs. Long life bulbs are recommended to reduce the frequency of bulb changes.



### To access the light bulb area:

1. Open steel curtain (remove glass doors if applicable).
2. Remove two screws on log bracket and set aside. (FIGURE 3)
3. Pull front edge of plastic ember bed or plastic grate up and forward until rear tab releases from the ledge located at the bottom of the mirror. (FIGURE 4)  
**Note:** Log set fits tightly into firebox, some force may be necessary to remove.
4. Examine the bulbs to determine which bulbs require replacement.
5. Unscrew bulbs counter clockwise.
6. Insert new bulbs.
7. Replace the log by inserting the rear tab of the logset under the back ledge of the fireplace and push down on the front edge of the logset until it snaps into place. (FIGURE 4)
8. Replace log grate using two screws previously removed.

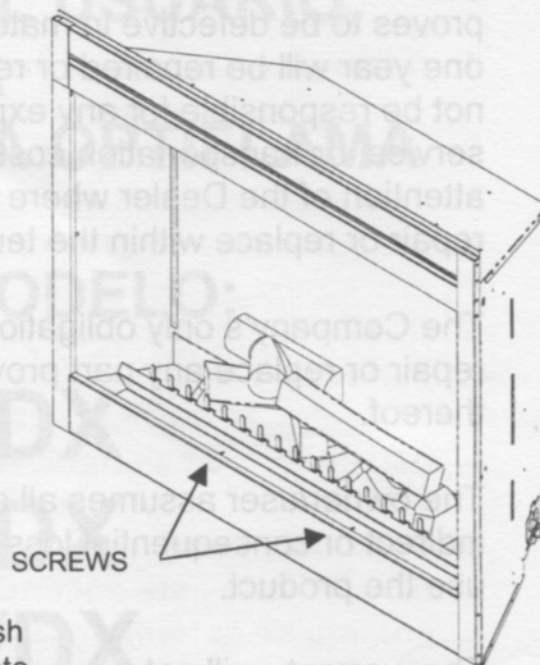


FIGURE 3

### Mirror Cleaning

The mirror is cleaned in the factory during the Assembly operation. During shipment, installation, Handling, etc., the mirror surface may collect dust Particles; these can be removed by buffing lightly With a clean dry cloth.

To remove fingerprints or other marks, the mirror can be cleaned with a damp cloth using good quality household glass cleaner. The mirror should be completely dried with a lint free cloth to prevent water spots. To prevent scratching, do not use abrasive cleaners or spray liquids on the clear door surface.

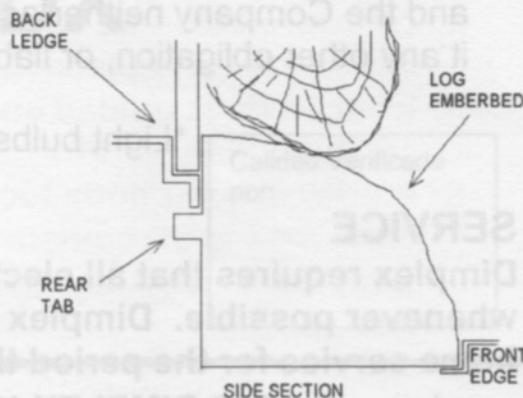


FIGURE 4

## ACCESSORIES

Please contact your local dealer for genuine Dimplex accessories. Example: Glass door kits, brass and stainless steel trims, remote control kits, plug kits, and cabinets designed to fit your Optiflame fireplace.

# WARRANTY

Dimplex Electric Fireplaces are tested and inspected prior to shipment and are guaranteed from defect to the purchaser of each new product. Any part which proves to be defective in material or workmanship under normal use within one year will be repaired or replaced without charge.\* The Company will not be responsible for any expense incurred for installation, removal from service, or transportation costs. Any such defect should be brought to the attention of the Dealer where the product was purchased and is authorized to repair or replace within the terms of this warranty.

The Company's only obligation under this warranty will be at its sole option to repair or replace any part proving defective or to refund the purchase price thereof.

The owner/user assumes all other risks, if any, including the risk of any direct, indirect or consequential loss or damage arising out of the use of or inability to use the product.

The warranty will not apply if, in the sole judgment of the Company, damage or failure has resulted from accident, alteration, misuse, abuse, incorrect installation, or operation on an incorrect power source.

The foregoing is in lieu of all other warranties expressed, implied, or statutory, and the Company neither assumes, nor authorizes any person to assume for it any other obligation, or liability in connection with said product.

\*Light bulbs are not covered in the warranty.

## SERVICE

Dimplex requires that all electric fireplace products are to be field serviced whenever possible. Dimplex electric fireplaces are covered by a free in home service for the period that the fireplace is under warranty. For service call 1-888-DIMPLEX (1-888-346-7539)



**1-888-DIMPLEX**  
1-888-346-7539

 **Dimplex**  
NORTH AMERICA LIMITED

1367 Industrial Road  
Cambridge, Ontario  
Canada, N1R 7G8

Approved for use in the United States and Canada